

PFS 30/PFS 41

C SERIES COMBINED SURFACE/THICKNESSER

The PFS 30 and PFS 41 combined surface/thicknessers are very sturdy and of a very high construction quality.

The thick ribbed, large sized, cast iron worktables together with the large, strong surface fence, allow even large sized panels to be precision machined easily.

Sturdiness, reliability, precision and ease of use are the main features of this product.





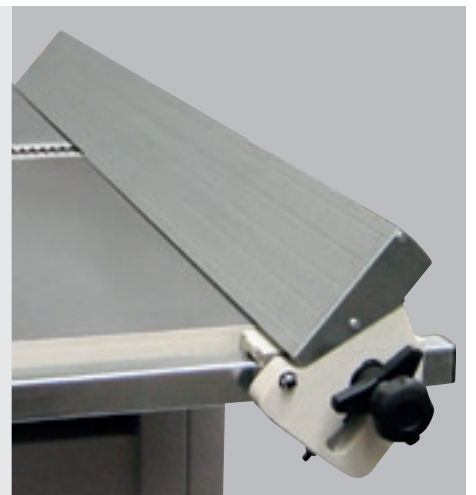
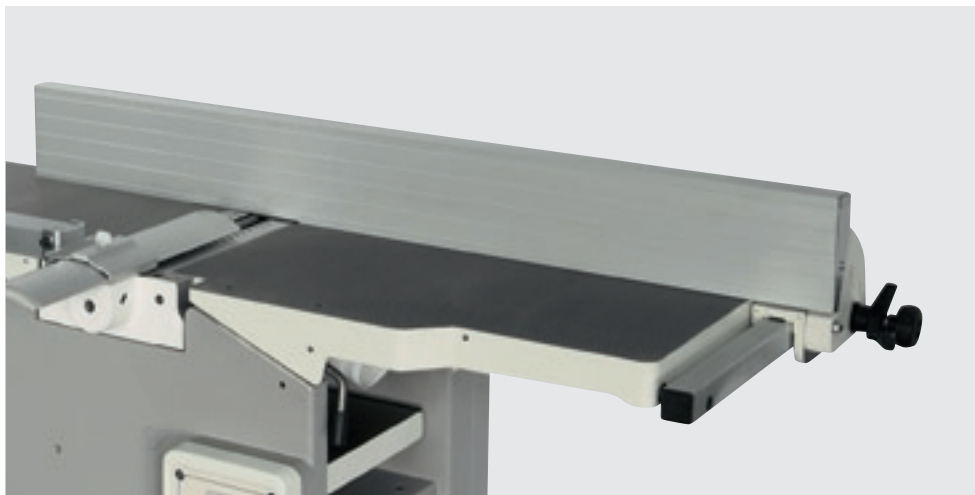
PFS 41

PFS 30/PFS 41

C SERIES COMBINED SURFACE/THICKNESSER



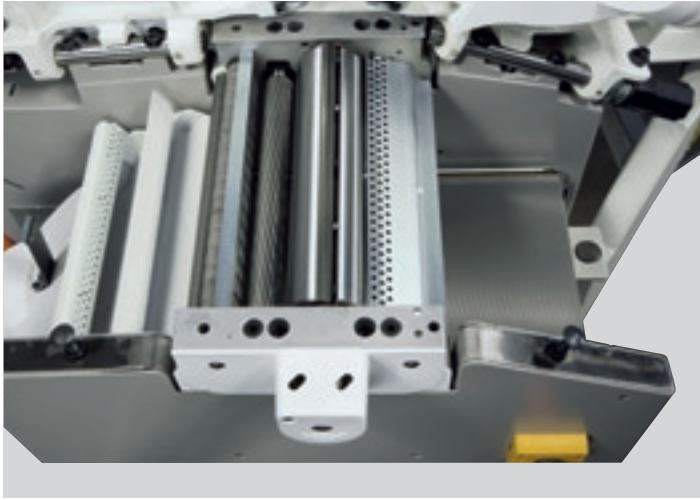
The sturdy, heavily ribbed, cast iron surface tables are very long in order to straighten very long parts.



Large sized surface fence tiltable 90° - 45°.



Opening of the surface tables is on the left whilst the mortiser, available on request, is positioned on the right. This allows space to be saved as the machine can be placed close to a wall. The mortiser, available on request, is equipped with a quick release device which allows quick removal.



Steel cutterblock with 3 knives. The infeed steel roller has helical gearing to facilitate introduction of parts. Adjustable feed roller pressure.



Cast iron mortiser, available on request, with sliding on cylindrical guides and complete with exhaust hood, eccentric pressure beam and 16 mm chuck.



Chuck with clamps 5-10-16 mm, available on request.



Wescott universal spindle 0 - 16 mm available on request.



Tersa cutterhead available on request. Fast knives replacement and a high quality finish are typical qualities of this cutterhead.

PFS 30/PFS 41

C SERIES COMBINED SURFACE/THICKNESSER

TECHNICAL DATA*	PFS 30	PFS 41
SURFACE PLANER		
Maximum working width	300 mm	410 mm
Total length of surface tables	1510 mm	1800 mm
Max. stock removal	4 mm	4 mm
Tilting fence 90°-45°	1300 x 150 mm	1670 x 150 mm
THICKNESSING PLANER		
Maximum working width	300 mm	410 mm
Thicknessing table dimensions	585 x 300 mm	605 x 410 mm
Feed speed on thickneser	7 m/min	7 m/min
Maximum cutting depth	4 mm	4 mm
Min./max. working height on thickneser	3/230 mm	3/230 mm
GENERAL TECHNICAL DATA		
Cutterblock rotation speed RPM	5200	5200
Knives	3	3
Motor power at 50 Hz (HP)	3 kW (4)	3 kW (4)
Motor power at 60 Hz (HP)	3,6 kW (4,8)	3,6 kW (4,8)
Suction hood diameter	2 x Ø 120 mm	2 x Ø 120 mm
Suction speed	20 m/sec	20 m/sec
Air consumption	750 m³/h	750 m³/h
Net weight basic machine	270 Kg	330 Kg

EQUIPMENTS*	PFS 30	PFS 41
First serrated helical infeed roller	●	●
Thicknessing table without bed rollers	●	●
Cast iron mortiser	○	○
Self-centering Wescott type chuck 0 ÷ 16 mm	○	○
Tersa monoblock cutterhead	○	○
Single-phase motor 1,8 kW 2,5 HP 50 Hz	○	○
Single-phase motor 3,6 kW 4,8 HP 60 Hz **	○	○
Three-phase motor 4 kW 5,5 HP 50 Hz ***	○	○

** Available only for USA/Canada versions

*** Not available for 60 Hz versions

* For technical, commercial and safety regulations reasons standard and extra accessories can change from country to country. Please refer to your nearest Casadei distributor.

In this catalogue, machines are shown with options and in CE configuration. We reserve the right to modify technical specifications without prior notice, provided that such modifications do not affect safety as per CE certification.

● = standard ○ = Optional - = Not available

NOISE LEVELS PFS 30/ PFS 41	PLANER	THICKNESSING
Acoustic pressure at the operator's infeed place while the machine is idling EN ISO 11201:1995 *(K = 2,5 dB)	76,5 dB (A)	70,2 dB (A)
Acoustic pressure at operator's infeed place while the machine is working EN ISO 11201:1995 *(K = 2,5 dB)	90,5 dB (A)	85,5 dB (A)
Acoustic pressure at operator's outfeed position while the machine is idling EN ISO 11201:1995 *(K = 2,5 dB)	-	73,0 dB (A)
Acoustic pressure at operator's outfeed position while the machine is working EN ISO 11201:1995 *(K = 2,5 dB)	-	85,3 dB (A)
Acoustic power while the machine is idling EN ISO 3744:1995 *(K = 2 dB)	83,6 dB W (A) 0,2 mW (A)	84,3 dB W (A) 0,3 mW (A)
Acoustic power with the machine running EN ISO 3744:1995 *(K = 2 dB)	96,6 dB W (A) 4,5 mW (A)	96,0 dB W (A)

*Uncertainty factor K (probability 68,27%)

The maximum instantaneous noise level pressure is under 130 dB (C).

The measurements were taken in compliance with the following standards under the specified test conditions, using the recommended materials and measuring instruments and to Rdp 02060. Planer EN 859:2007 + A1:2009 Thicknessing EN 860:2007 + A1:2009

DIMENSIONS

