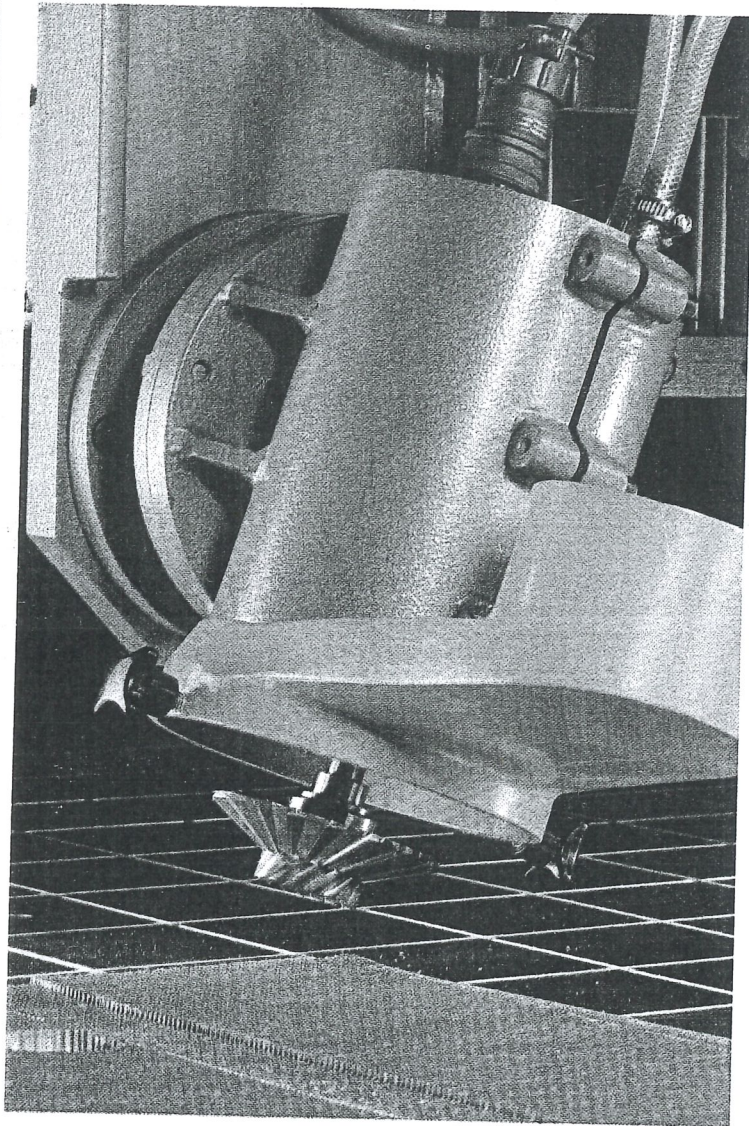


**REICHENBACHER –
your partner in the future**

Production line



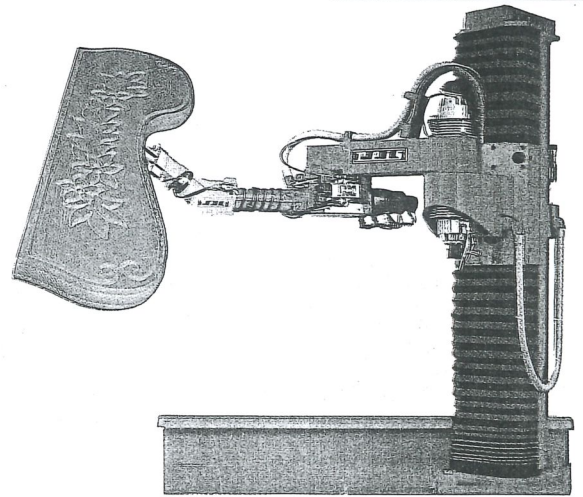
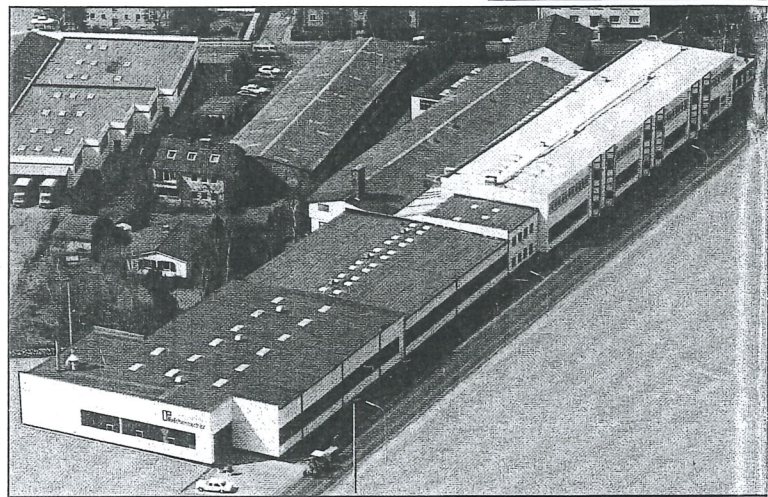
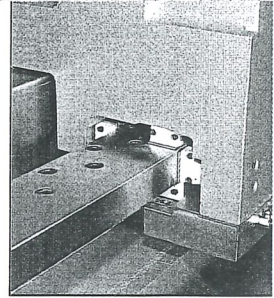
E

**MASCHINENFABRIK
Reichenbacher**

Technology you can only get from REICHENBACHER.



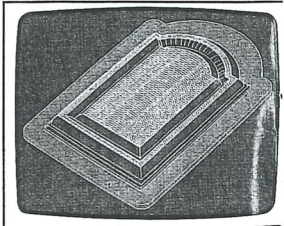
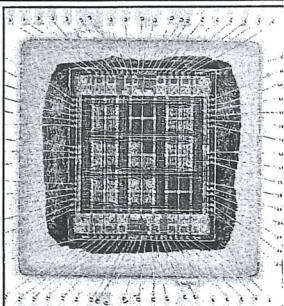
Accurate, economical, progressive. Trust our "Know-How"!



The REICHENBACHER company in Dörfles-Esbach/Coburg (Northern Bavaria) was founded in 1954. From the beginning the dynamic company specialized in the development and production of machines for the woodworking and plastics industries. The quality machines produced by REICHENBACHER are used all over the world and are renowned for their high precision, solidity and economy.

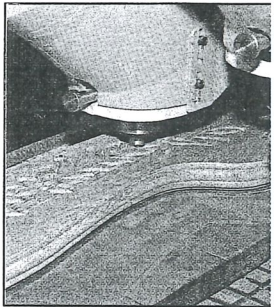
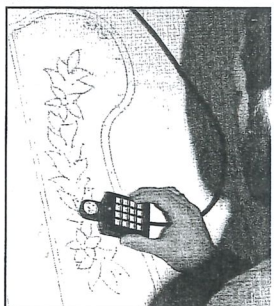
REICHENBACHER is working with ultra-modern technic to guarantee a future of optimum partnership for its customers. High-quality CAD-working places promise to keep high-quality standards and permanent developments in new machine generations.

These optimum constructions are part of the mechanic production workshop on latest CNC-metal working machines; all are completed by qualified mechanics, the result being first class quality machines.



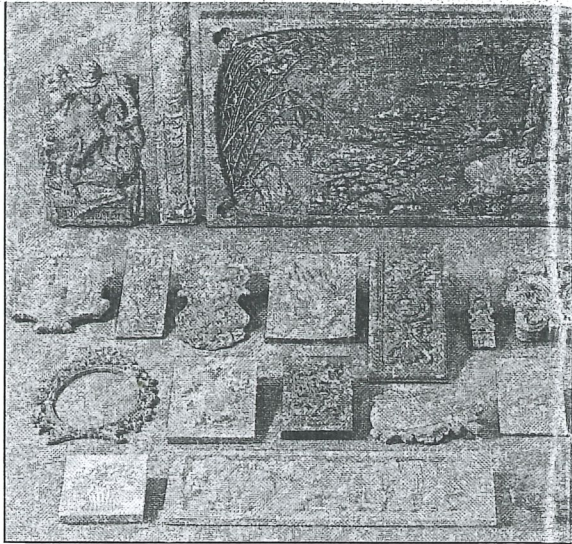
Driving and guiding systems of the machine tool manufacturing are the basis for optimum machining results combined with robust machine construction at highest feed rates. An expensive concept, that becomes economical for the user after decades of maintenance-free function. **Precision knows no bounds.** Machines in assembly lines and robots on loading are proving particularly successful.

A guarantee for permanent optimum run of all REICHENBACHER machines offers the perfect EDV-organization starting with the order department, inventory control, purchasing and planning department, assembly workshop up to the servicing department, combined with the fast acting mounting service.



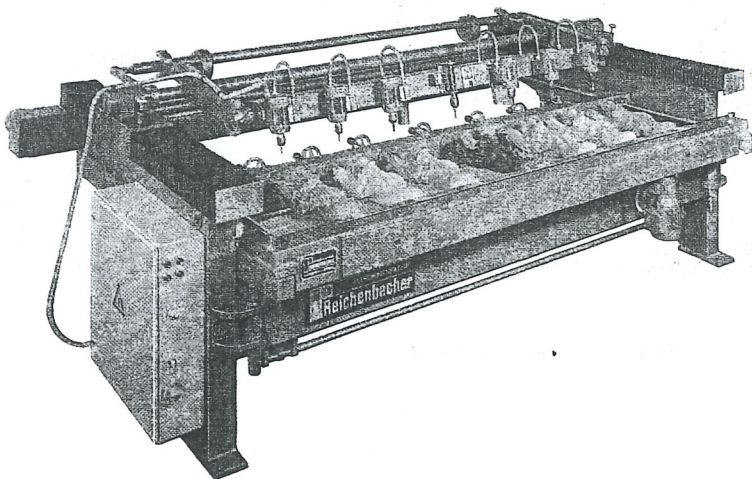
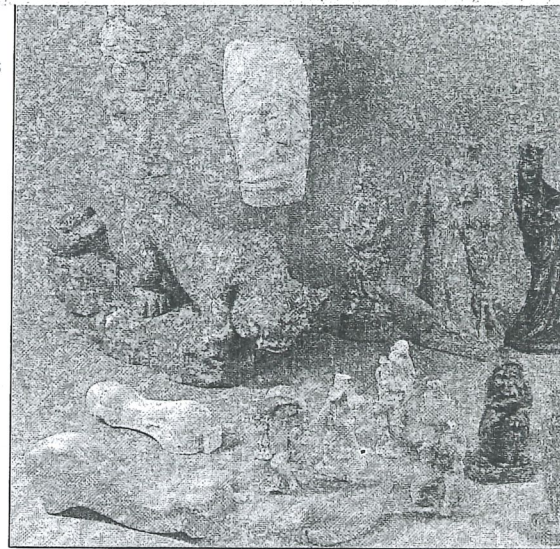
Carving machines with 2 to 16 spindles for circular and flat work. This is the only way to produce high quality carving economically.

TYPE
R-632



For small enterprises with less carving work we recommend the machine type

TYPE
**R-PROFI
Z30**

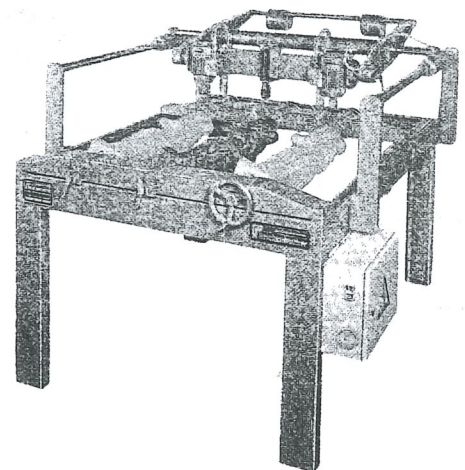


The frequency motors with 12 000 and 18 000 rpm and 0,7 to 2,0 HP guarantee fast and clean work. Rotation of workpieces and models is effected with precision gears to exclude miscuttings. For flat carvings the table is easily mounted. All machine motions are on ball bearings. The longitudinal movements are guided on hardened and ground shafts on spherical liners. These slides are protected by bellows for maintenance free and easy operation.

Milling width: 320 to 1 000 mm

Milling length: 1 000 to 6 000 mm

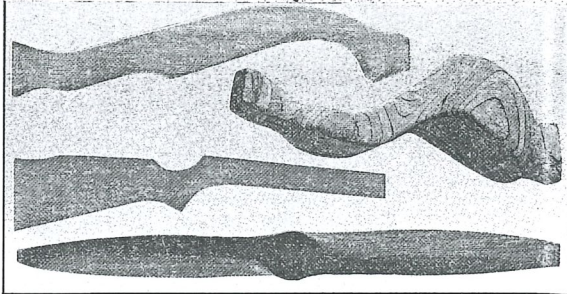
Options: passageway for greater milling lengths gearmotor for workpiece rotation counterweight system "lifomat" for simple table movement motors with double shaft ends fully automatic controlled machines



2 milling spindles with 0,7 HP and 18 000 rpm
Milling width 300 mm (option 420 mm)
Milling length 900 mm (option 1 000 mm)

All machines of the REICHENBACHER program are for hard and soft wood, ivory and synthetic materials. All surface results being of the highest quality.

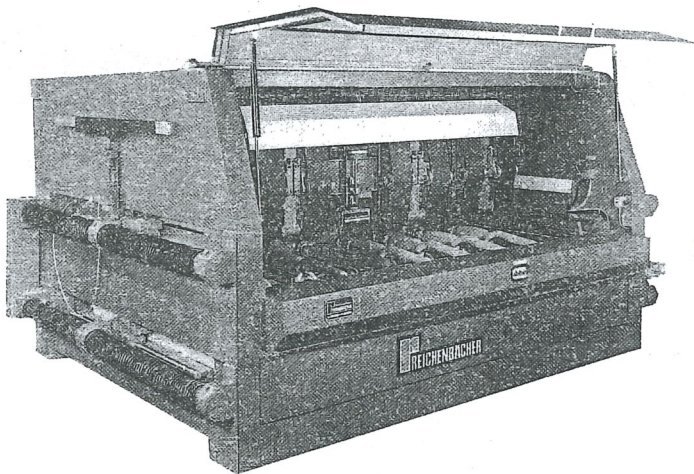
To complete the program, REICHENBACHER also offers machines for the reduction and enlargement of carvings (type RMF), flat carving machines for copying of violins, cellos, chair seats etc (type RA) and the cutter sharpening machine (type FS 510). To convince you of the quality of our machines and the carvings produced, please send us your most difficult part. We will copy it for you free of cost.



TYPE
E/ES

This modern copy milling lathe is available with 2, 4, 6 and 8 milling spindles. Rough and finish milling is done automatically in one setting. Left and right copies of one model mean less changeovers and models. Direct drive of the milling spindles with high frequency motors of 2,0 to 5,0 HP guarantee fast cutting at constant rotation speed.

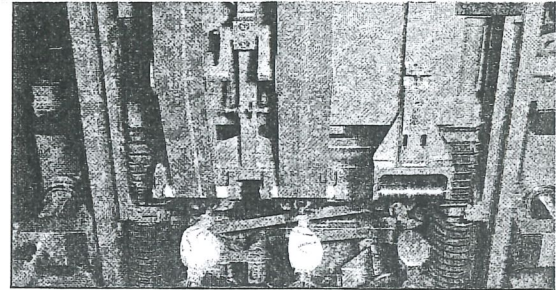
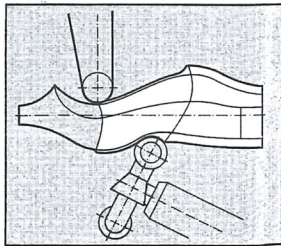
The longitudinal sanding unit is optional for the simultaneously cutting and sanding of wooden parts. Ball screw systems of the highest precision permit rapid traverse of 10 m/min without any play or wear.



The basic equipment of machine includes:

- insertion templates for positioning of raw parts
- automatic reduction of clamping pressure
- pneumatic clamping of model
- pneumatic clamping of workpiece support
- guidings and feed screws are hardened and grounded - provided outside of machine
- precision worm gears for rotation of workpieces, running in oil bath.
- rough and finish cutting (to avoid presawing)

The cabinet around the machine reduces noise, optimizes the extraction results and offers absolute security for the operator.

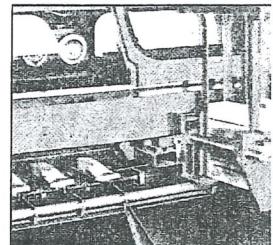


TYPE
KS220

Particularly for small parts, such as pipe heads, handles, golf-club heads, wooden parts of dolls etc. the copy milling lathe type "KS 220" is excellent. Two parts are cut and sanded in one clamping and completely finished by the same machine. This machine is especially recommended for small, finely formed parts that require the highest precision.

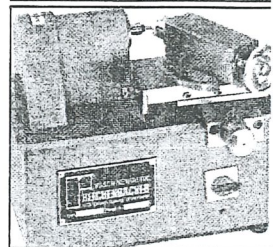
Magazine loading

To reduce loading times and facilitate operation REICHENBACHER offers a magazine loading system. The standard safety devices guarantee an automatic and correct copying cycle.



Sharpening machine for bell-cutters

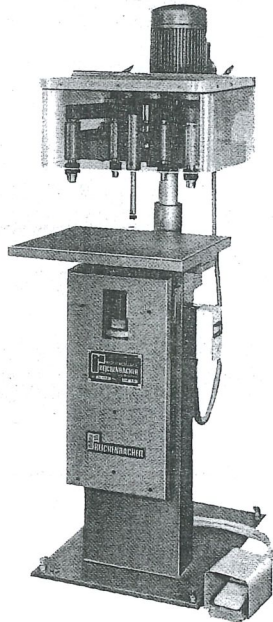
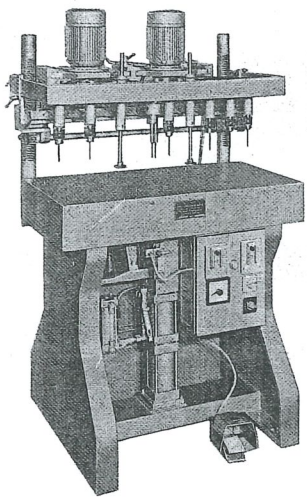
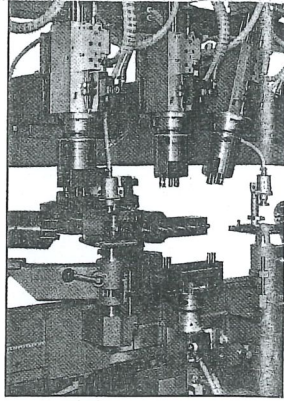
Precisely sharpened cutters are essential for maximum production and quality. REICHENBACHER offers the sharpening machine for bell cutters, type GS 500, which is also able to sharpen tools with concave grinding.



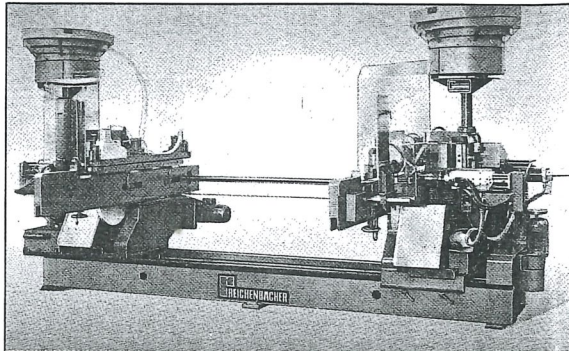
TYPE
RN 1315

TYPE
RN 1315/E

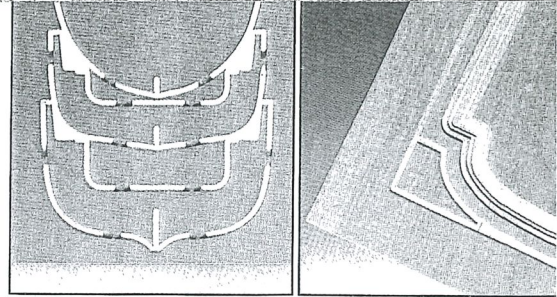
These universal multi-spindle drilling machines were developed for drilling workpieces of wood or similar materials economically, such as aluminium and synthetic materials in large and small series.



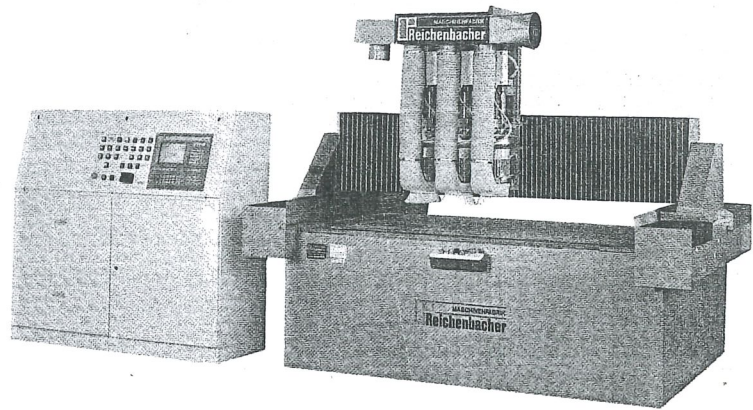
Options are magazine loading, automatic transport through the machine and destacking. For the upholstered furniture industry REICHENBACHER offers these types of drilling machines with sawing units, dowel-driving aggregates and movable milling aggregates.



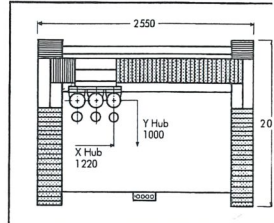
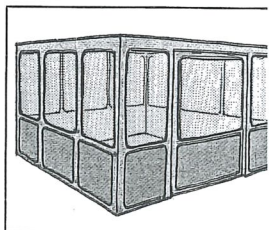
TYPE
RANG-AM

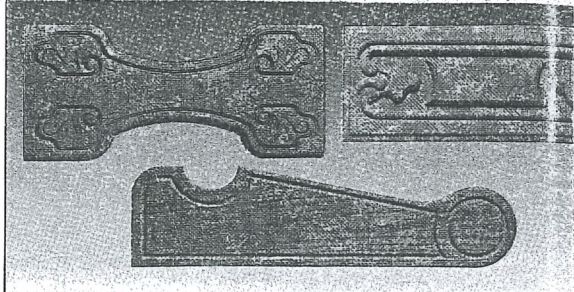


This CNC-router provides a price/performance ratio that is unsurpassed. The routing quality and production rate speak for themselves. This is only possible with robust machine construction, roller pads, hardened guide ways, high-dynamic motor drives and the latest CNC-controls. A proven machine, ideal for small series and companies getting into the CNC-production.



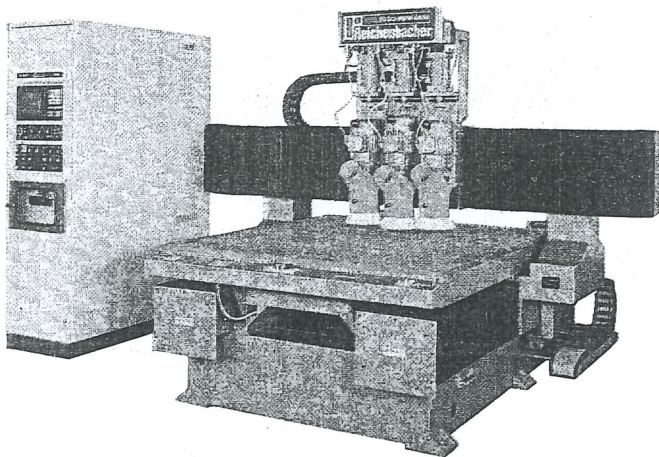
Tools make all movements (X, Y and Z-axis). The machine can be equipped with up to 3 milling-, sawing-, drilling and sanding aggregates, table size 2000 x 1200 mm, working range 1200 x 1000 mm. The standard equipment already includes vacuum grid table complete with vacuum pump, -controller, -magnetic valves as well as quick-changing couplings and valves for pneumatic clamping elements. The enclosure of the machine is an advantage for the purpose of dust control, noise reduction and safety.



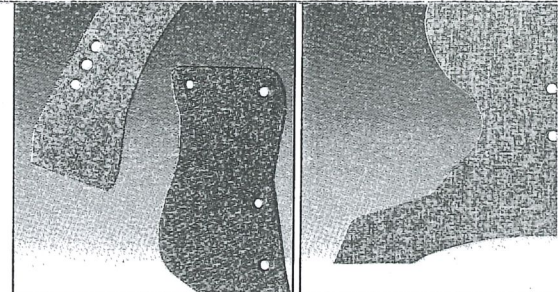


TYPE
RANG-A

This universal CNC-controlled machine with 1 to 4 aggregates has successfully proved itself in the toughest production. Stability and precision present the high REICHENBACHER standard. A characteristic of this machine is the fixed table which offers great advantages for reciprocal loading. The grid plate of the table permits clamping the workpieces on either the table or on special jigs. The tools make the path-controlled movement in all 3 axes.

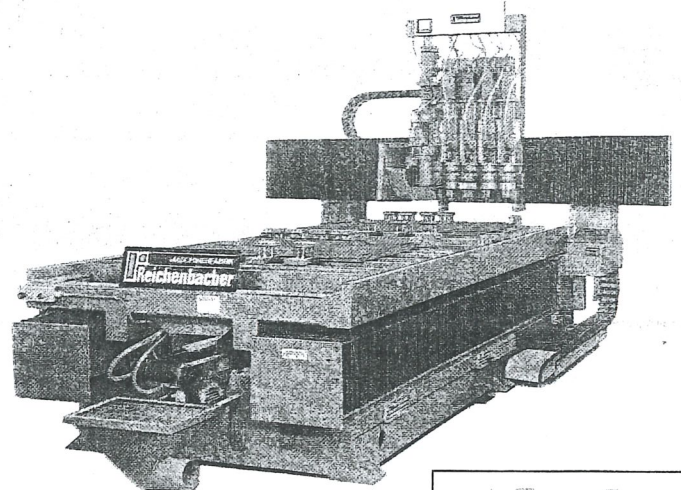


Standard movement in X-direction (width) 1 840 mm, standard movement in Y-direction (depth) 1 000, 1 600, 2 300 and 3 000 mm. Greater axis motions are also possible. The machine is provided with any desired working units (milling, drilling, sanding, threading...). In case more than 3 (4) aggregates are required for the production of one part, the turret head with 4, 6 or 8 motors is used or the automatic tool changer with up to 16 different tools. The infinitely variable speed from 1 200 to 18 000 rpm. by static converter guarantees any required production. Further CNC-controlled axes for clamping, swivelling and turning of workpieces are available. The milling motor also moves in additional axes, if the workpiece shape requires.



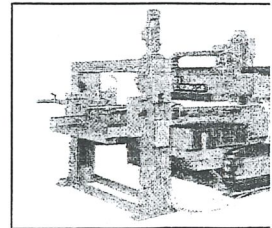
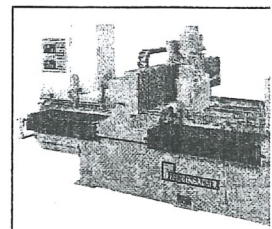
TYPE
RANG-AE

This numerically controlled machining center was especially developed for drilling and routing cheeks of chipboards for the upholstered furniture industry. The machine can be supplied with a milling spindle up to 11 kW (15 HP) at 18 000 rpm. and a maximum of 4 drilling units that can be equipped with single spindles or multi-spindle drilling heads. A transport belt is included in this REICHENBACHER standard. Further options are: 2 drilling stations working independently from each other, automatic destacking and transport through the machine.

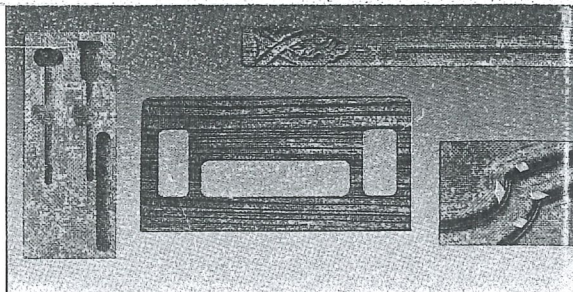


Type RAC 350 AE with twice the number of aggregates and productive capacity completes the program.

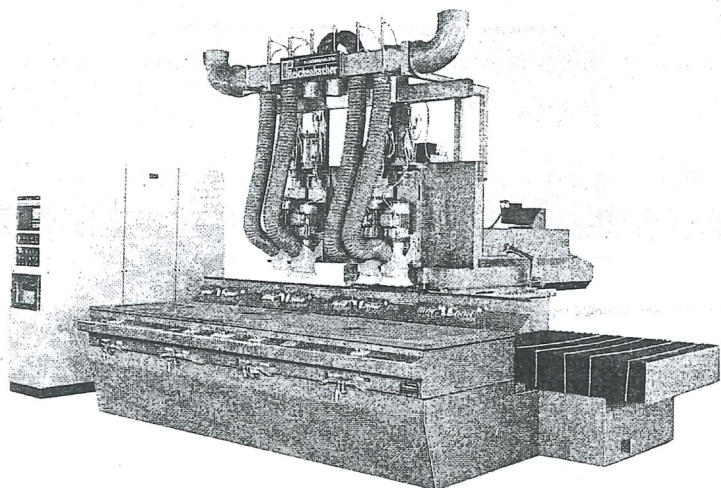
A digitalization system developed by REICHENBACHER with simple operation increases the output of machine with fast preparation of programs and direct data transmission to the CNC-control.



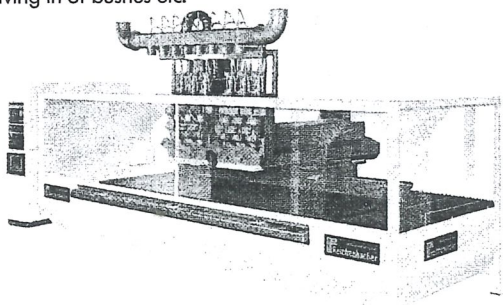
TYPE
RANC-S



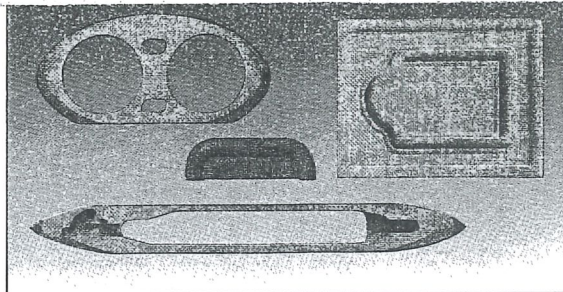
This standard CNC-router is already an indispensable piece of equipment in many plants. Output and cutting quality correspond to the high REICHENBACHER standard. The fixed table makes the machine very easy to operate and offers optimum conditions for reciprocal loading of parts. Maximum depth in Y-direction 750 and 1000 mm. Table size in X-direction (length) 2 420 / 3 300 / 4 000 / 5 000 / 6 000 and 8 000 mm.



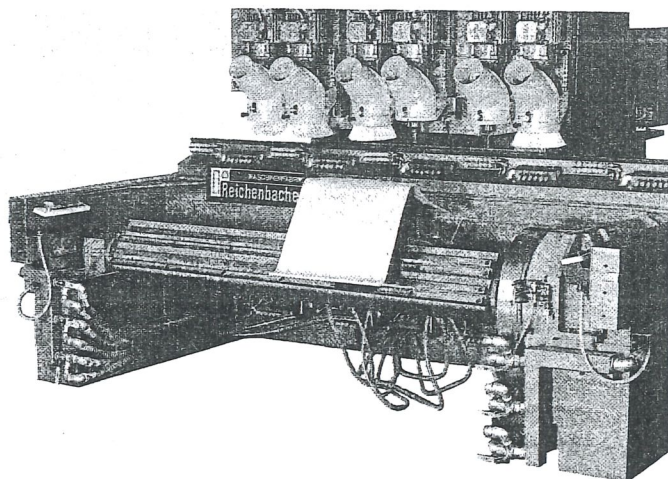
Up to 8 different working aggregates in one line, turret heads with 4, 6 or 8 spindles and the tool changer demonstrate the great operative range of this machine. The numerically controlled Z-(immersion) motion is applicable for nearly all workpieces and permits the use of aggregates for routing, drilling, sawing, threading, stamping of letters and figures, driving in of bushes etc.



TYPE
RANC-SD

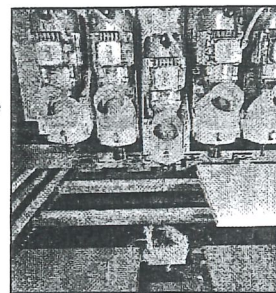


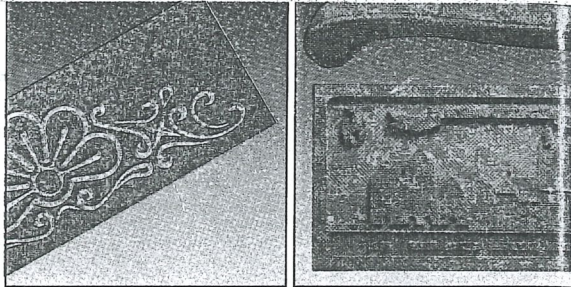
For the production of chair seats/backrests REICHENBACHER offers the type RANC-SD with a numerically controlled swivelling axis (A). The parts can either be damped with vacuum or pneumatic and turned by program with 45 degrees per sec. If the swivelling axis is not required a vacuum grid board or another jig can be mounted on the available supports. The greater machine type can be provided with a swivelling axis and a fixed vacuum grid table to produce shaped workpieces as well as flat parts with quick changeover.



TYPE
RANC-SK

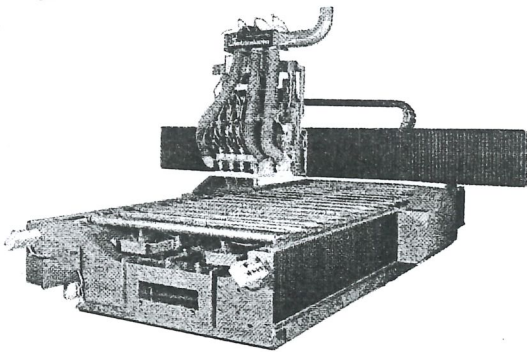
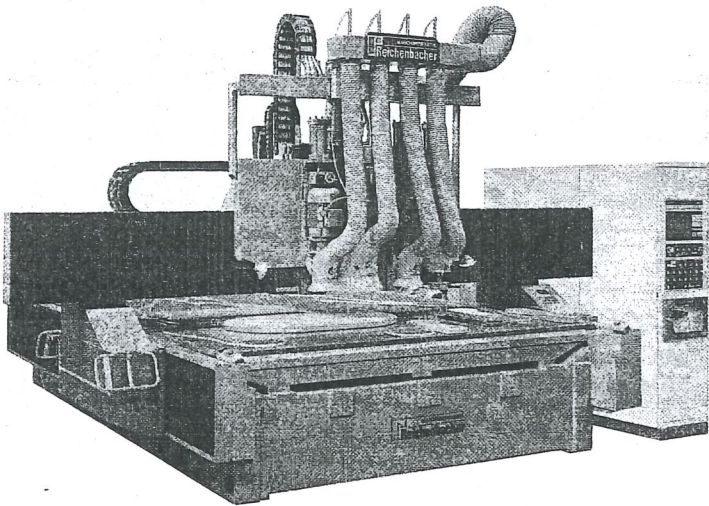
This machine is used in the kitchen industry and moves 5 axes simultaneously to fulfil all requirements of this versatile production. The workpieces are transported with an automatic sinkable roller path into the machine, positioned by stops and pneumatically clamped. Position of aggregates from above: milling tool for the cutouts, corners and profiles, each one left- and right-handed joint cutter for the corner, sawing aggregate with height tracing for sawing the groove. The routings for the straining screws is done from below.



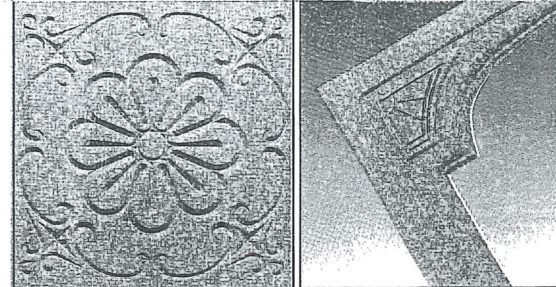


TYPE
RANC-P

For large and especially long parts (such as caravan parts, lorry and boat mountings) as well as extremely difficult productions REICHENBACHER offers the type RANC-P with working width of 2600 mm and working length between 1600 and 13000 mm. Notably, it is the solid machine construction of this type that permits the use of all working aggregates in any desired variation - outstanding for this type.

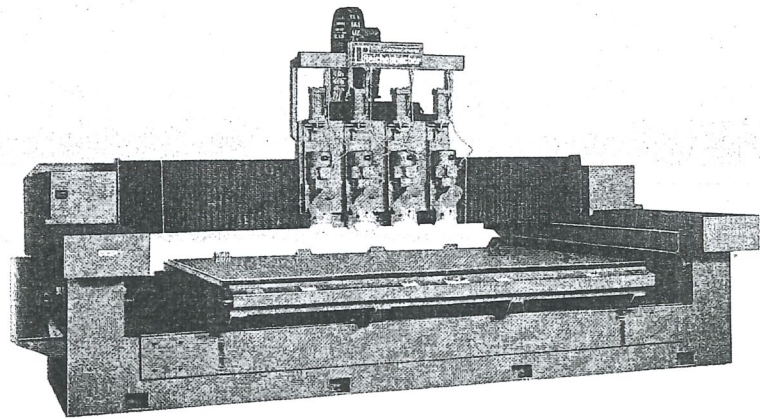


Different table designs are available. The fixed table accessible from 3 sides offers the customer many possibilities for feeding and removing the parts.

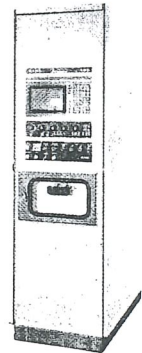


TYPE
RANC-N

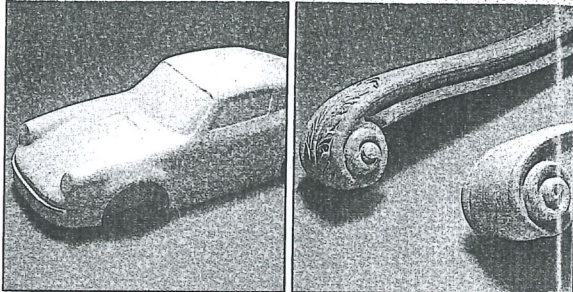
The success of the REICHENBACHER-CNC-controlled machines was based on type RANC-N with its significant high placed guidances, combined with the solid machine frame. Three different widths (X-motion) are available with 1320, 2420 and 3300 mm. Possible lengths (Y-motion) with 1000, 1600 and 2100 mm. The machine can be supplied according to the customers' special requirements due to 8 working aggregates or 3 multi-turret heads. For high parts the Z-motion can be increased to 400 mm or more.



Further CNC-controlled axes combined with controls of the latest CNC-technology can also be realized on type RANC-N.

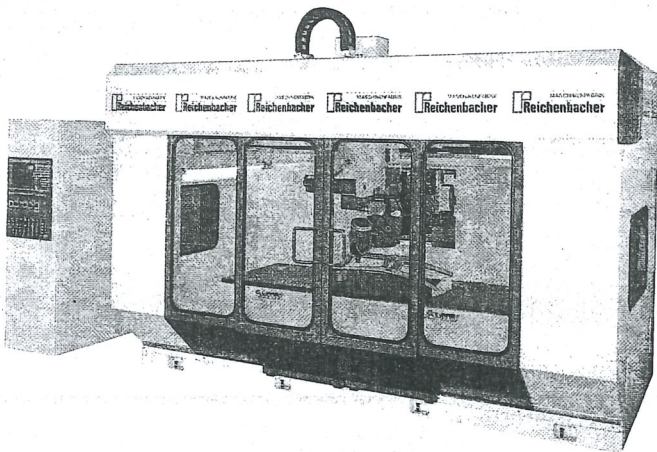


TYPE
**RANG-
SPRINT**



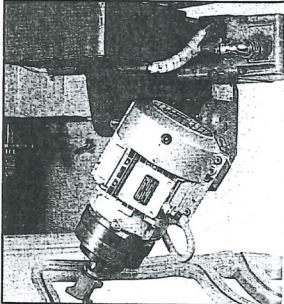
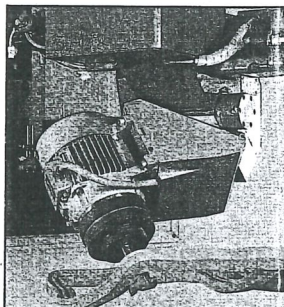
This CNC-controlled machining centre can work parts on 5 sides at any desired angle from vertical to horizontal direction with:

- 5 CNC-controlled axes
- 5 D interpolation linear - circular - spline

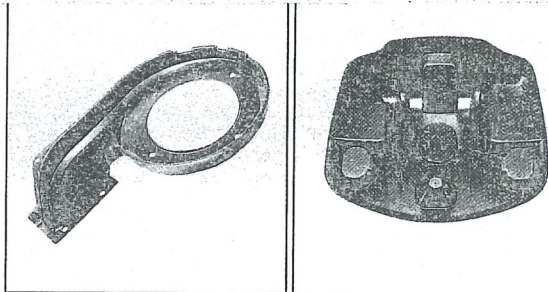


- automatic tool changer for 16 tools - fixed workpiece - tool makes all movements - automatic programming
The used turret head applied for patent permits, that the center line of both swivelling axes intersect each other along the tool axis. Thus no balancing corrections of the linear axes are required at horizontal swivelling of tool. This makes programming easier!

Working ranges:
X = 2300 mm
Y = 700 mm
Z = 400 mm
B = 360 degrees
C = 720 degrees

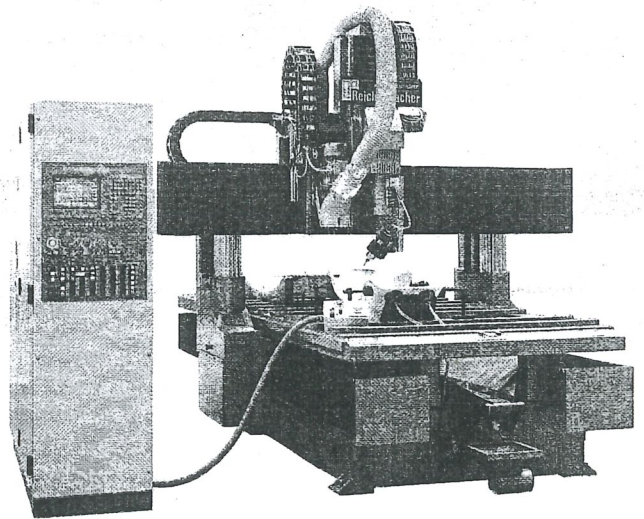


TYPE
**RANG-
ROBOTIC**



The plastics industry requires special solutions due to its many and quick-changing designs. REICHENBACHER meets these problems with the RANG-Robotic. Besides finishing work on synthetic materials it can route and drill in solid material if required. To fulfil all these requirements the machine portal can be moved up and down to guarantee optimum working conditions in any case. The transport belt removes chips and other material that fall down.

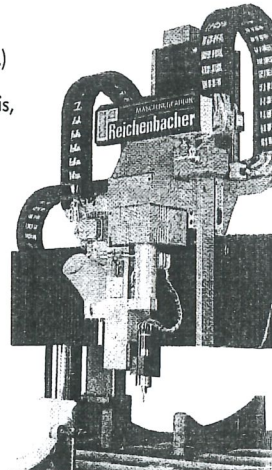
Further motors are available with infinitely variable speed rotation:



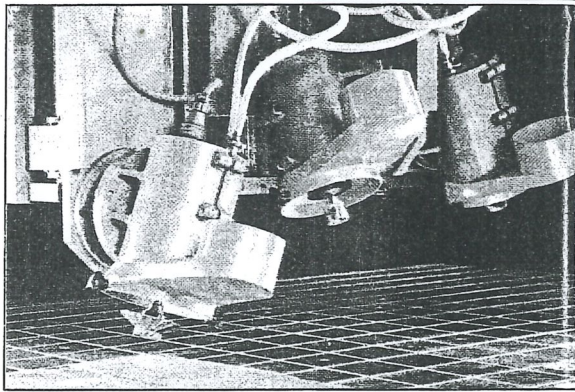
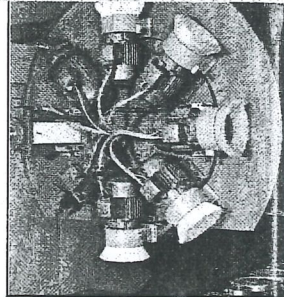
- 6,5 HP milling motor (1200 - 18000 rpm.)
- 0,7 HP special milling motor (1200 - 18000 rpm.)
- 1,2 HP high-frequency motor (15000 - 54000 rpm.)

A CNC-control of the latest generation moves all 6 axes X/Y-motion, Z-immersion axis, W-immersion axis, B-swivelling axis and C-rotation axis.

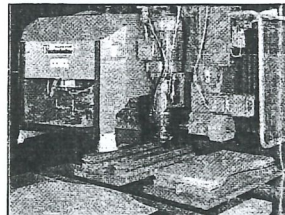
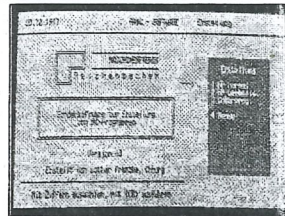
Working areas of machine:
X-axis 1840 mm
Y-axis 3000 (1600/2300 mm)
Z-axis 230 mm
W-axis 600 mm



REICHENBACHER offers a solution for ALL present working problems with a great number of different mechanic and numerically adjustable working aggregates. Besides single units, the tool changer can be used in many ways.



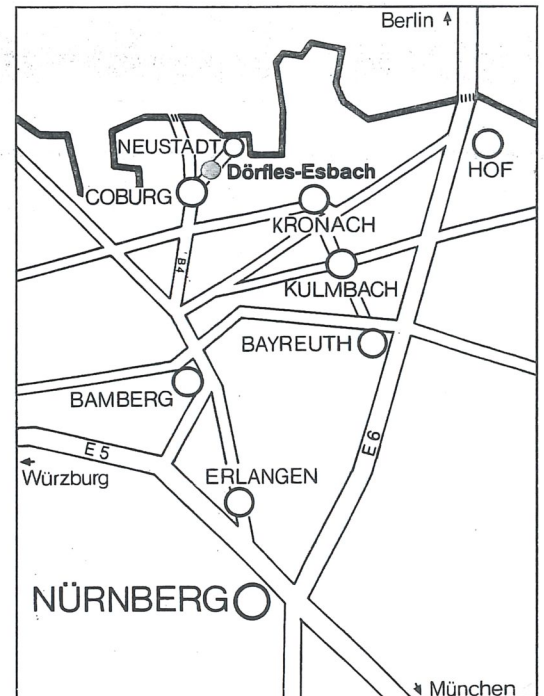
REICHENBACHER also solves all clamping problems for its customers. The standard already includes a vacuum table with adapted vacuum pump as well as vacuum and pneumatic plug-in connections. Furthermore the REICHENBACHER range offers individual suckers selected by program, suction strips, rollers/air pressure units adjustable and approachable by program as well as mechanic or pneumatic clamping units. Our constant development guarantees our customer's future!



You can rely on REICHENBACHER for top quality, highest precision, maximum possible efficiency, optimum service. REICHENBACHER makes no false compromises for new machine developments and always meets the customers' actual and future requirements:

- increasing productivity and flexibility
- increasing variety of products
- fast adaptation of products to market fluctuations
- small series – smaller order quantities
- shorter production times – less stock – short delivery

And that's the way you can find us:



REICHENBACHER the right partner!



Reichenbacher GmbH
P.O. Box 28
D-8635 Dörfles-Esbach/Coburg
West Germany
Tel.: (09563) 990 <(09561) 5990 >
Telefax (09563) 9999 <(09561) 59999 >
Telex: 663352