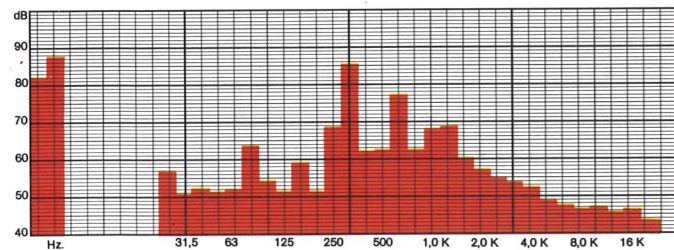
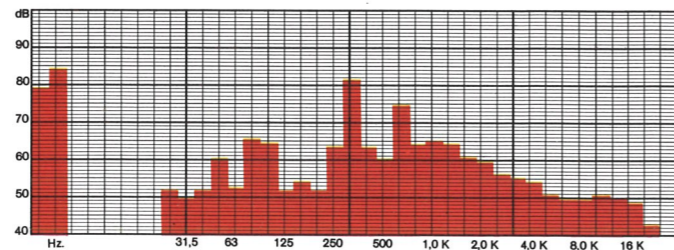


2250 TECHNICAL SPECIFICATIONS



2250 combined surfacing thickening planer. **Surface planer:** noise level according to DIN standard 45635/1650. 78 dB(A) average noise level.



2250 combined surfacing thickening planer. **Thickening planer:** noise level according to DIN standard 45635/1650. 76 dB(A) average noise level.

Surface planer

Working width	500 mm (19 43/64")
Length of surfacing tables	2200 mm (86 39/64")
infeed table	1180 mm (46 29/64")
outfeed table	980 mm (38 37/64")
Cutterblock diameter	120 mm (4 43/64")
Cutterblock speed	4500 rpm
Knives	4
Fence dimensions	1000x145 mm (39 26/64"x 5 43/64")
Fence tilting up to	45°
Motor	4 kW (5.5 HP)
Noise level*	78 dB(A)

Thickening planer

Table dimensions	500x930 mm (19 43/64"x36 39/64")
Max. thickness capacity	235 mm (9 13/64")
Min. thickness capacity	3 mm (1 12/64")
Max. depth of cut	8 mm (3 1/64")
Feed speed	7.5/15 m/min (24.6/49.3 ft/min)
Noise level*	76 dB(A)

* Measurements made with machine idle (DIN 45635/1650 regulations). Noise level of machine when working: thickening planer 81 dB(A); surface planer 84 dB(A).

The 2250 can also be supplied without the PHT system

Extremely low noise level

The 2250 definitely resolves the noise problem particularly found in all traditional surfacing and thickening planers. Research carried out over a number of years by SCM in this field has resulted in exceptional results on this machine contributing greatly to improving the working environment and safeguarding operators health. Only 76 dB(A)* on thickener planer and 78 dB(A)* on surface planer.

* DIN 45635/1650 regulations.

Standard equipment

4 knives / Knife setting device / Digital dimension visualizer of stock thickness / Servicing spanners.

Main optionals

Mortiser / Automatic rise and fall of thickening table with 0.15 kW (0.2 HP) motor / Shaving hood serving both planer and thickener with 150 mm (5 7/64") dia. / 5.5 kW (7.5 HP) motor / Overload switch protection

Mortiser

Table dimensions 550x300 mm (21 39/64"x11 52/64") / Longitudinal stroke 200 mm (7 52/64") / Transversal stroke 120 mm (4 43/64") / Vertical stroke 135 mm (5 19/64")

The illustrations and the data contained in this brochure are not binding. SCM reserves the right to make changes for technical, commercial and organizational reasons, the main characteristics of the machines remaining unaltered. In addition, the parts added, such as the protections, accessories, etc. can differ to conform to the laws and special requirements of the countries to which the machines are to be supplied.

2250 COMBINED SURFACING THICKENING PLANER

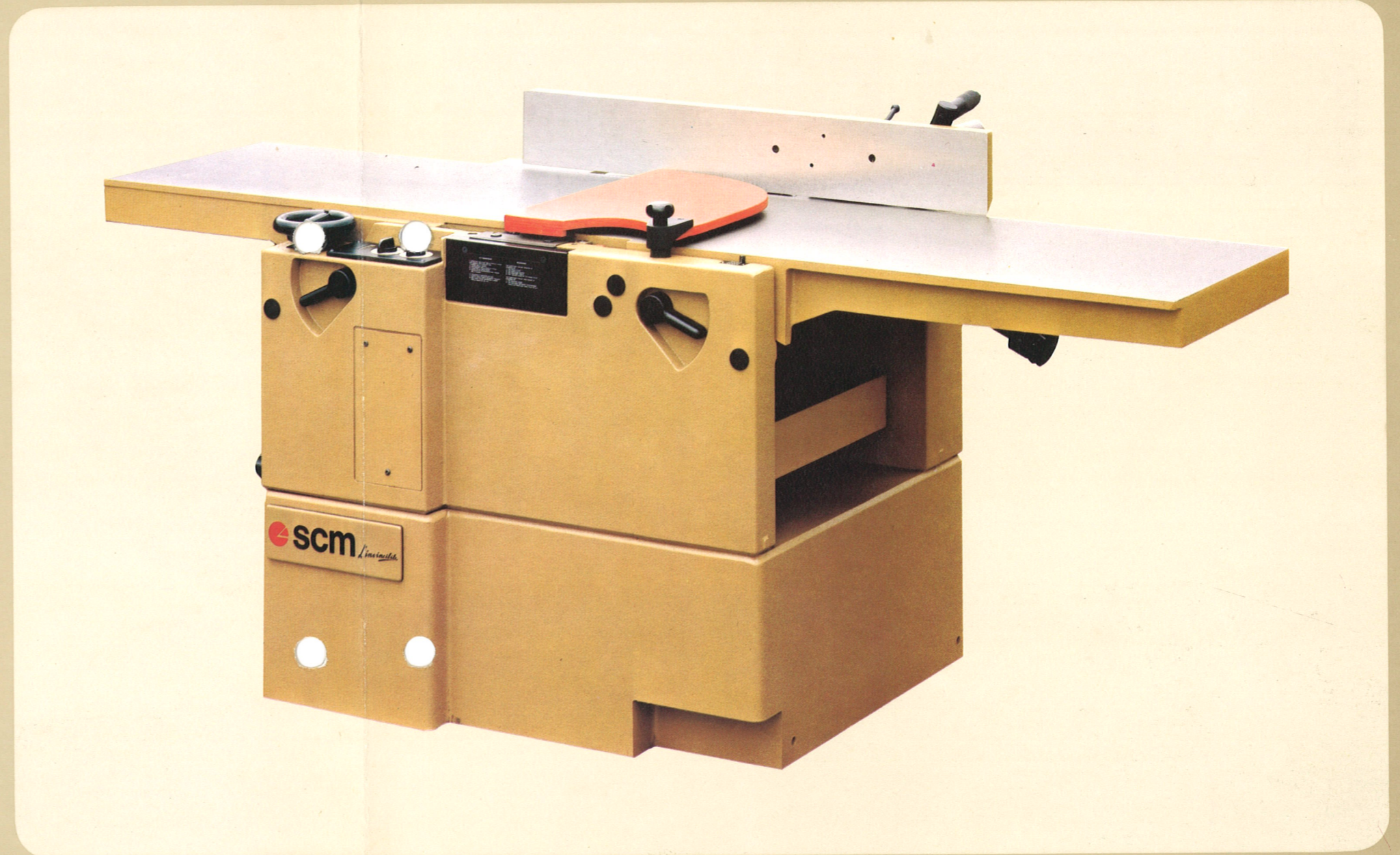


2250 COMBINED SURFACING THICKNESSING PLANER

The 2250 combined surfacing thicknessing planer has been designed and manufactured by SCM offering to small and medium sized companies an accurate heavy duty machine which is easy to use. The 2250 combines the traditional ruggedness of SCM machines with an easy to use, quickly set up machine. Also offering the operator the benefit of its extremely low noise level. A result of research carried out by SCM to improve working environment.

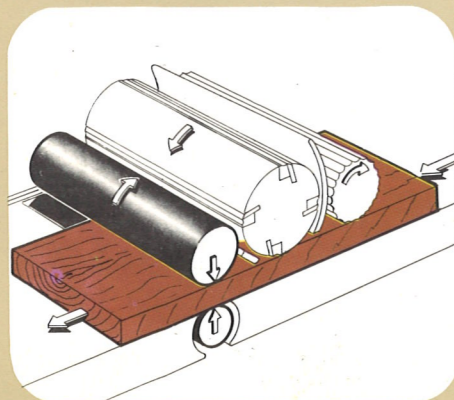
- Length of surfacing tables 2200 mm to ensure straightening of extra long components.
- Length of thicknessing table 930 mm offering a large supporting surface particularly useful when processing heavy or large sized workpieces.
- Digital display of working thickness.
- Centralized electric control panel.
- Extremely low noise level: only 75 dB(A)* on thicknessing planer and 78 dB(A)* on surfacer.

* DIN 45635/1650 regulations - Average noise level with machine idle without dust extraction.



Reliable precise processing

The ruggedness and rigidity of the 2250 guarantees maximum precision: the thickness table is supported by 4 columns located in 4 reference guides to ensure perfect horizontal stability. Whilst the sturdy surface planer tables are ribbed to guarantee long life and high performance.



Leading technology: PHT feed system

The 2250 is equipped with PHT (Pure Horizontal Thrust) feed system: 2 rollers upper and lower grip workpiece during feed without pushing against thicknessing table. In this way friction between timber and table is reduced by over 70% allowing the feeding power to be remarkably increased in comparison with traditional feed system. This is particularly useful when a heavy cut is required or machining damp or resinous wood.

Easy to set up and use

Setting up time is considerably reduced on the 2250 thanks to the simple starting and regulation procedure. The thickness of cut is easily selected by means of digital display. Rise and fall of the table is motorized with fine adjustment obtained via handwheel like the infeed table of the surface planer adjustment lever, these controls are all in easy reach of the operator. With all electric control housed in a centralized panel a great deal of attention has been taken to guarantee maximum safety when operating the machine.

